

TABLE OF CONTENTS

Data & AI	3
Art and Artificial Intelligence	3
Artificial Intelligence Value Discovery Analysis (AIVDA)	3
Become a Business Intelligence Specialist	4
Become a Business Intelligence Specialist	4
Data structures and complexities for Big Data processing	5
Data structures and complexities for Big Data processing	5
Data Warehouse Designer	6
Discover Data Analysis with Power BI : Level 1 Getting Started	6
Discover Data Analysis with Power BI : Level 1 Getting Started	7
Discover Data Analysis with Power BI : Level 2 – Advanced	8
Discover Data Analysis with Power BI : Level 2 – Advanced	8
Discover Data Analysis with Power BI : Level 2 – Advanced	9
Discover Data Analysis with Qlik Sense : Level 1 – Qlik Sense Designer	10
Discover Data Analysis with Qlik Sense : Level 1 – Qlik Sense Designer	10
Discover Data Analysis with Qlik Sense : Level 2 – Qlik Sense Data Architect	11
Discover Data Analysis with Qlik Sense : Level 2 – Qlik Sense Data Architect	11
Discover Data Analysis with Qlik Sense : Level 2 – Qlik Sense Data Architect	12
Données personnelles et sécurité de l'information - Enjeux juridiques et nouvelles règles de l'UE	12
How to Cope with the Future AI Act	13
IA, Éthique et Société - Comment vivre et développer l'IA	13
Introduction à la gestion de données au Luxembourg	13
Introduction à un outil de type ETL – Extract Transform Load – Travaux pratiques	15
Introduction appliquée à l'intelligence artificielle pour le citoyen	15
Introduction aux concepts et à la modélisation d'un Data Warehouse	15
Introduction to data-science and machine learning with python	16
Introduction to data-science with python	16
Introduction to deep learning	17
Introduction to image processing	17
Introduction to machine learning with python	18
Introduction to Natural Language Processing	18
Journey to AI and chatGPT	19
Journey to AI and chatGPT	19
Mastering ChatGPT and Prompt Engineering to unleash your productivity and creativity	20
Privacy and Data Protection: Legal Stakes and Fundamentals	21
Quantum Communications: Theory and Applications	21

Quantum Computing: Basic Theory and Future Expectations	21
The components of Business Intelligence (BI) / Data Analytics processes	22
The components of Business Intelligence (BI) / Data Analytics processes	22
Utilisation et spécialisation de grands modèles de langues comme ChatGPT	23

DATA & AI



ART AND ARTIFICIAL INTELLIGENCE

After a brief introduction to artificial intelligence (AI), its role in our daily lives and current scientific research on the subject, participants discover that this technology can be used to create works of art. The various stages in the design of artificial intelligence are covered: data collection and preparation, training and finally evaluation of the AI. Through presentations and hands-on activities, this workshop highlights the importance of data and how it can be used to train intelligent machines. It also enables participants to form their own opinions on artificial intelligence and understand the impact on our society of new tools such as ChatGPT.

[View online](#)

Price: 12,00 €

Start date: 25.10.2023

Instructor(s): Régine POUSSIN

Language: English

Difficulty: Beginner



ARTIFICIAL INTELLIGENCE VALUE DISCOVERY ANALYSIS (AIVDA)

AIVDA is an adaptive training workshop that enables participants to discover and harness the potential of Artificial Intelligence (AI) in just two days.

DataThings' AI Value Discovery Analysis enables you to identify AI use cases that have the potential to deliver rapid and significant ROI for your company, as well as explore related business opportunities.

AI is perceived as a buzzword today, and its purpose and potential capabilities are often misunderstood. Every day, at DataThings we experience how AI can spur innovation and deliver exceptional user experiences. We are eager to support you and your teams, using relevant design-thinking tools, in implementing AI and transforming your business into a happy and augmented organization, driven by human-centricity.

At the end of the course, participants will be able to understand both the benefits and the risks, as well as the aspects of AI that may fit the needs of their organization in terms of potential projects. They will be able to apply different methodologies to identify and evaluate the potential ROI for AI solution implementation.

[View online](#)

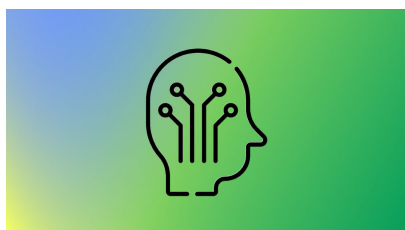
Price: 64,00 €

Start date: 05.03.2024

Instructor(s): SALLEBANT-BESSONE, Franck-Alexandre, Dr. NAIN, Grégory

Language: English

Difficulty: Beginner



BECOME A BUSINESS INTELLIGENCE SPECIALIST

The Business Intelligence Training Path is a comprehensive and structured program designed to equip participants with the essential skills and knowledge required to excel in the field of Business Intelligence (BI). This training path covers a wide range of topics, starting from fundamental concepts and gradually progressing to advanced techniques, tools, and methodologies used in BI.

[View online](#)

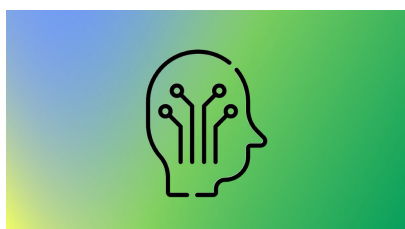
Price: 234,00 €

Start date: 16.01.2024

Instructor(s): Axel Pierard, Céline Massompierre, Yassine Mekdour, Mayssae Chimi

Language: English

Difficulty: Intermediate



BECOME A BUSINESS INTELLIGENCE SPECIALIST

The Business Intelligence Training Path is a comprehensive and structured program designed to equip participants with the essential skills and knowledge required to excel in the field of Business Intelligence (BI). This training path covers a wide range of topics, starting from fundamental concepts and gradually progressing to advanced techniques, tools, and methodologies used in BI.

[View online](#)

Price: 234,00 €

Start date: 16.04.2024

Instructor(s): Axel Pierard, Céline Massompierre, Yassine Mekdour, Mayssae Chimi

Language: English

Difficulty: Intermediate



DATA STRUCTURES AND COMPLEXITIES FOR BIG DATA PROCESSING

When processing big data, performances are critical. Without a proper use of data structures, processing rapidly becomes lengthy and can generate huge financial and technical overheads.

This course begins with a general overview of computers and cloud architectures, to recall the base mechanisms and highlight the components that can hinder the performances. The notion of complexity in software engineering is then introduced and used as a baseline for evaluations of the structures. The remainder of the day is an alternation of theory and reminders on data structures and practice sessions.

The aim is to raise awareness on which structure is most appropriate for which case, and that the technology used to process (software and hardware) has an impact on performances.

[View online](#)

Price: 32,00 €

Start date: 13.11.2023

Instructor(s): Dr. NAIN, Grégory

Language: English

Difficulty: Intermediate



DATA STRUCTURES AND COMPLEXITIES FOR BIG DATA PROCESSING

When processing big data, performances are critical. Without a proper use of data structures, processing rapidly becomes lengthy and can generate huge financial and technical overheads.

This course begins with a general overview of computers and cloud architectures, to recall the base mechanisms and highlight the components that can hinder the performances. The notion of complexity in software engineering is then introduced and used as a baseline for evaluations of the structures. The remainder of the day is an alternation of theory and reminders on data structures and practice sessions.

The aim is to raise awareness on which structure is most appropriate for which case, and that the technology used to process (software and hardware) has an impact on performances.

[View online](#)**Price:** 32,00 €**Start date:** 19.03.2024**Instructor(s):** Dr. NAIN, Grégory**Language:** English**Difficulty:** Intermediate

DATA WAREHOUSE DESIGNER

L'analyse des données est un processus qui permet d'analyser les performances d'une entreprise, qu'elles soient passées, présentes ou futures, et aide les décideurs à prendre des actions éclairées. Dans le cadre de ce processus d'analyse, les organisations passent par trois étapes. Premièrement, elles collectent des données à partir de systèmes informatiques opérationnels et de sources externes. Deuxièmement, elles transforment et préparent ces données pour l'analyse. Troisièmement, elles exécutent des requêtes sur ces données et créent des visualisations de données, c'est-à-dire des tableaux de bord Business Intelligence (BI) et des rapports pour mettre les résultats analytiques à la disposition des utilisateurs pour une prise de décision optimale. L'objectif de cette activité étant de prendre les meilleures décisions est de permettre aux entreprises par exemple d'augmenter leurs revenus, d'améliorer leur efficacité opérationnelle et d'obtenir des avantages concurrentiels par rapport à la compétition.

[View online](#)**Price:** 96,00 €**Start date:** 08.11.2023**Instructor(s):** Damien GAIONI, Anis ABIRIGA**Language:** French**Difficulty:** Beginner



DISCOVER DATA ANALYSIS WITH POWER BI : LEVEL 1 GETTING STARTED

With a focus on simplicity and practicality, this course is designed to equip participants with the necessary skills and knowledge to harness the full potential of Power BI as a powerful analytics tool.

Throughout the course, participants will be introduced to the foundational concepts of data analysis, starting with data acquisition and preparation.

As the course progresses, learners will explore the multitude of visualization options that Power BI offers. They will discover how to create compelling and interactive reports and dashboards, combining different chart types and customizing visuals.

The course trainer, an Expert Power BI himself, will guide participants through real-world examples and practical exercises, ensuring that each learner gains a solid grasp of the concepts and develops the confidence to apply their newfound skills independently.

Upon successful completion of this course, attendees will be equipped with the capability to explore, analyze, and visualize data effectively using Power BI.

[View online](#)

Price: 52,00 €

Start date: 17.01.2024

Instructor(s): Mayssae Chimi

Language: English

Difficulty: Beginner



DISCOVER DATA ANALYSIS WITH POWER BI : LEVEL 1 GETTING STARTED

With a focus on simplicity and practicality, this course is designed to equip participants with the necessary skills and knowledge to harness the full potential of Power BI as a powerful analytics tool.

Throughout the course, participants will be introduced to the foundational concepts of data analysis, starting with data acquisition and preparation.

As the course progresses, learners will explore the multitude of visualization options that Power BI offers. They will discover how to create compelling and interactive reports and dashboards, combining different chart types and customizing visuals.

The course trainer, an Expert Power BI himself, will guide participants through real-world examples and practical exercises, ensuring that each learner gains a solid grasp of the concepts and develops the confidence to apply their newfound skills independently.

Upon successful completion of this course, attendees will be equipped with the capability to explore, analyze, and visualize data effectively using Power BI.

[View online](#)

Price: 52,00 €

Start date: 17.04.2024

Instructor(s): Mayssae Chimi

Language: English

Difficulty: Beginner

DISCOVER DATA ANALYSIS WITH POWER BI : LEVEL 2 – ADVANCED

In this course, participants will build upon their foundational knowledge of Power BI and delve deeper into its advanced features and functionalities.

The course aims to empower learners with the ability to leverage Power BI's advanced data manipulation capabilities to handle complex datasets effectively. Participants will learn how to create and customize sophisticated visualizations, design interactive reports, and develop insightful dashboards to gain meaningful insights from their data.

Throughout the course, emphasis is placed on mastering advanced data modeling techniques, such as DAX formulas and relationships, to perform calculations and create dynamic measures. Moreover, participants will explore the integration of various data sources, enabling them to consolidate data from multiple origins for comprehensive analysis.

By the end of the course, attendees will have a proficient understanding of the tool's advanced features, empowering them to conduct in-depth data analysis and produce compelling, data-driven reports and visualizations.

[View online](#)

Price: 52,00 €

Start date: 05.10.2023

Instructor(s): Yassine Mekdour

Language: English

Difficulty: Intermediate





DISCOVER DATA ANALYSIS WITH POWER BI : LEVEL 2 – ADVANCED

In this course, participants will build upon their foundational knowledge of Power BI and delve deeper into its advanced features and functionalities.

The course aims to empower learners with the ability to leverage Power BI's advanced data manipulation capabilities to handle complex datasets effectively. Participants will learn how to create and customize sophisticated visualizations, design interactive reports, and develop insightful dashboards to gain meaningful insights from their data.

Throughout the course, emphasis is placed on mastering advanced data modeling techniques, such as DAX formulas and relationships, to perform calculations and create dynamic measures. Moreover, participants will explore the integration of various data sources, enabling them to consolidate data from multiple origins for comprehensive analysis.

By the end of the course, attendees will have a proficient understanding of the tool's advanced features, empowering them to conduct in-depth data analysis and produce compelling, data-driven reports and visualizations.

[View online](#)

Price: 52,00 €

Start date: 13.02.2024

Instructor(s): Yassine Mekdour

Language: English

Difficulty: Intermediate



DISCOVER DATA ANALYSIS WITH POWER BI : LEVEL 2 – ADVANCED

In this course, participants will build upon their foundational knowledge of Power BI and delve deeper into its advanced features and functionalities.

The course aims to empower learners with the ability to leverage Power BI's advanced data manipulation capabilities to handle complex datasets effectively. Participants will learn how to create and customize sophisticated visualizations, design interactive reports, and develop insightful dashboards to gain meaningful insights from their data.

Throughout the course, emphasis is placed on mastering advanced data modeling techniques, such as DAX formulas and relationships, to perform calculations and create dynamic measures. Moreover, participants will explore the integration of various data sources, enabling them to consolidate data from multiple origins for comprehensive analysis.

By the end of the course, attendees will have a proficient understanding of the tool's advanced features, empowering them to conduct in-depth data

analysis and produce compelling, data-driven reports and visualizations.

[View online](#)

Price: 52,00 €

Start date: 22.04.2024

Instructor(s): Mayssae Chimi

Language: English

Difficulty: Intermediate



DISCOVER DATA ANALYSIS WITH QLIK SENSE : LEVEL 1 – QLIK SENSE DESIGNER

This course focuses on enabling learners to become proficient Qlik Sense designers, capable of creating interactive visualizations, building data models, and generating insightful reports to gain valuable business insights from their data.

Through hands-on exercises and practical examples, attendees will develop a solid foundation in Qlik Sense and its essential features, setting the stage for more advanced data analysis capabilities.

[View online](#)

Price: 52,00 €

Start date: 30.01.2024

Instructor(s): Alex Pierard

Language: English

Difficulty: Beginner



DISCOVER DATA ANALYSIS WITH QLIK SENSE : LEVEL 1 – QLIK SENSE DESIGNER

This course focuses on enabling learners to become proficient Qlik Sense designers, capable of creating interactive visualizations, building data models, and generating insightful reports to gain valuable business insights from their data.

Through hands-on exercises and practical examples, attendees will develop a solid foundation in Qlik Sense and its essential features, setting the stage for more advanced data analysis capabilities.

[View online](#)

Price: 52,00 €

Start date: 02.05.2024

Instructor(s): Alex Pierard

Language: English

Difficulty: Beginner

DISCOVER DATA ANALYSIS WITH QLIK SENSE : LEVEL 2 – QLIK SENSE DATA ARCHITECT

The Qlik Sense Data Architect course is a comprehensive program tailored for experienced data professionals who aspire to become proficient in architecting and optimizing data solutions within the Qlik Sense environment. Participants will learn advanced data modeling techniques, data integration strategies, performance optimization, and security measures, equipping them with the skills to design and implement robust data architectures that support complex analytical requirements.

Through practical exercises and real-world use cases, attendees will gain the expertise needed to leverage the full potential of Qlik Sense as a data architect and contribute to data-driven decision-making processes within their organizations.

[View online](#)

Price: 52,00 €

Start date: 24.10.2023

Instructor(s): Céline Massompierre

Language: English

Difficulty: Intermediate



DISCOVER DATA ANALYSIS WITH QLIK SENSE : LEVEL 2 – QLIK SENSE DATA ARCHITECT

The Qlik Sense Data Architect course is a comprehensive program tailored for experienced data professionals who aspire to become proficient in architecting and optimizing data solutions within the Qlik Sense environment. Participants will learn advanced data modeling techniques, data integration strategies, performance optimization, and security measures, equipping them with the skills to design and implement robust data architectures that support complex analytical requirements.

Through practical exercises and real-world use cases, attendees will gain the expertise needed to leverage the full potential of Qlik Sense as a data architect and contribute to data-driven decision-making processes within their organizations.

[View online](#)

Price: 52,00 €

Start date: 05.02.2024

Instructor(s): Céline Massompierre

Language: English
Difficulty: Intermediate



DISCOVER DATA ANALYSIS WITH QLIK SENSE : LEVEL 2 – QLIK SENSE DATA ARCHITECT

The Qlik Sense Data Architect course is a comprehensive program tailored for experienced data professionals who aspire to become proficient in architecting and optimizing data solutions within the Qlik Sense environment. Participants will learn advanced data modeling techniques, data integration strategies, performance optimization, and security measures, equipping them with the skills to design and implement robust data architectures that support complex analytical requirements.

Through practical exercises and real-world use cases, attendees will gain the expertise needed to leverage the full potential of Qlik Sense as a data architect and contribute to data-driven decision-making processes within their organizations.

[View online](#)

Price: 52,00 €

Start date: 06.05.2024

Instructor(s): Céline Massompierre

Language: English

Difficulty: Intermediate



DONNÉES PERSONNELLES ET SÉCURITÉ DE L'INFORMATION – ENJEUX JURIDIQUES ET NOUVELLES RÈGLES DE L'UE

Cette formation vise apporter les éléments de compréhension des concepts et enjeux juridiques de la sécurité de l'information. Elle permet ensuite aux participants de contrôler et de valider leur conformité.

[View online](#)

Price: 16,00 €

Start date: 27.11.2023

Instructor(s): M. TOME, Mickaël

Language: French

Difficulty: Beginner



HOW TO COPE WITH THE FUTURE AI ACT

If assisted tools are acknowledged to improve process of organisations, there are also growing concerns about their embedded algorithms which remain biased. Like previously with General Data Protection Regulation (GDPR), companies will have to comply with an upcoming EU regulation relating to their use of AI assisted systems in order to prevent the perpetuation of historical patterns of discrimination (e.g., against women, certain age groups, persons with disabilities, or persons of certain racial or ethnic origins or sexual orientation).

This training will help organisations cope with the future AI Act. To learn more about this regulation: <https://artificialintelligenceact.eu/>

[View online](#)

Price: 16,00 €

Start date: 08.12.2023

Instructor(s): Expert from LIST

Language: English

Difficulty: Intermediate



IA, ÉTHIQUE ET SOCIÉTÉ – COMMENT VIVRE ET DÉVELOPPER L'IA

L'intelligence artificielle (IA) représente l'un des domaines du monde numérique qui fait actuellement l'objet d'un développement important partout dans le monde. Cela signifie que les citoyens sont et seront confrontés, dans leur vie professionnelle et personnelle, à des produits numériques qui incluent des composants d'intelligence artificielle.

Cette formation aborde de façon claire, pratique et avec de nombreuses interactions avec les participants, les notions clés de l'IA et de étudie son impacte sur l'emploi et l'éthique des sociétés.

[View online](#)

Price: 28,00 €

Start date: 30.11.2023

Instructor(s): Prof. Dr. GUELF, Nicolas

Language: French

Difficulty: Beginner



INTRODUCTION À LA GESTION DE DONNÉES AU LUXEMBOURG

L'importance des données dans le paysage numérique actuel et des considérations spécifiques liées à leur gestion au Luxembourg ne cessent de croître.

Les données sont devenues un atout essentiel pour les organisations dans tous les secteurs, favorisant une prise de décision éclairée, améliorant l'efficacité opérationnelle et permettant l'innovation. Cependant, une gestion efficace des données nécessite une compréhension approfondie des bonnes pratiques de l'industrie et des cadres réglementaires nationaux et européens. Dans ce contexte, le cadre légal de la gestion des données joue un rôle crucial afin de garantir la protection des droits des citoyens, et en vue de promouvoir la transparence et l'établissement de lignes directrices pour un traitement dit « responsable » des données.

Via un tour d'horizon des principes de gestion des données, des pratiques et du paysage réglementaire, ce cours dote les participants des connaissances nécessaires pour faire face aux complexités de la gestion des données au Luxembourg. Il couvre des sujets tels que les données ouvertes, les lois sur la protection des données, la qualité des données, les considérations relatives à l'infrastructure, l'analyse et les aspects éthiques de l'utilisation des données.

Objectifs de la formation :

1. Fournir aux participants des bases solides en matière de principes et de pratiques de gestion des données adaptées au contexte luxembourgeois.
2. Donner aux participants les compétences et les connaissances nécessaires pour gérer et exploiter efficacement les données dans divers contextes organisationnels.
3. Aborder le paysage réglementaire spécifique et les lois sur la protection des données au Luxembourg et au niveau européen.
4. Lier les connaissances théoriques aux pratiques de gestion des données dans la vie de tous les jours.

Le cours est constitué de présentations, de discussions interactives, d'études de cas et d'exercices pratiques.

[View online](#)

Price: 24,00 €

Start date: 07.12.2023

Instructor(s): Alain Vagner Alain, Nicolina Campagna

Language: French

Difficulty: Beginner



INTRODUCTION À UN OUTIL DE TYPE ETL – EXTRACT TRANSFORM LOAD – TRAVAUX PRATIQUES

Ce module fait partie d'un Learning Track plus vaste qui compte 24 heures réparties sur deux modules. Ce module en particulier est composé de trois parties de travaux pratiques. Dans la première partie, les apprenants réalisent un pipeline data avec Talend et dans la deuxième partie, ils réalisent un pipeline avec Datastage. Enfin, dans la troisième partie, ils créent un pipeline data avec Azure Data Factory.

[View online](#)

Price: 48,00 €

Start date: 29.11.2023

Instructor(s): Damien GAIONI, Anis ABIRIGA

Language: French

Difficulty: Beginner



INTRODUCTION APPLIQUÉE À L'INTELLIGENCE ARTIFICIELLE POUR LE CITOYEN

L'intelligence artificielle (IA) représente l'un des domaines du monde numérique qui fait actuellement l'objet d'un développement important partout dans le monde. Cela signifie que les citoyens sont et seront confrontés, dans leur vie professionnelle et personnelle, à des produits numériques qui incluent des composants d'intelligence artificielle. Cette formation aborde de façon claire, pratique et avec de nombreuses interactions avec les participants, les notions clés de l'IA et de l'apprentissage profond qui se développent à grande vitesse de nos jours.

[View online](#)

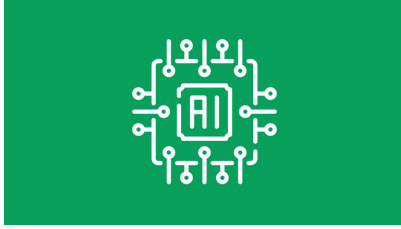
Price: 56,00 €

Start date: 26.10.2023

Instructor(s): Prof. Dr. GUELF, Nicolas

Language: French

Difficulty: Beginner



INTRODUCTION AUX CONCEPTS ET À LA MODÉLISATION D'UN DATA WAREHOUSE

Ce module fait partie d'un Learning Track plus vaste qui compte 24 heures réparties sur deux modules. Ce module en particulier est composé de deux parties. Dans la première partie, les apprenants reçoivent un cours d'introduction sur l'émergence du "Data Analytics". Les apprenants découvriront et comprendront l'avènement des systèmes d'information décisionnels. Dans la deuxième partie, il y aura des travaux dirigés sur la modélisation d'un Data warehouse. Les apprenants comprendront les méthodes et les enjeux d'une modélisation multidimensionnelle.

[View online](#)

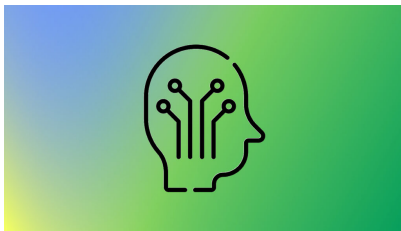
Price: 48,00 €

Start date: 08.11.2023

Instructor(s): Damien GAIONI

Language: French

Difficulty: Beginner



INTRODUCTION TO DATA-SCIENCE AND MACHINE LEARNING WITH PYTHON

This learning track provides a first dive in the machine learning world with python. It starts with the basics of data-science (data-analysis, data-wrangling and data-visualization). Then we move to the basics of machine learning to finish with an introduction to deep learning.

[View online](#)

Price: 224,00 €

Start date: 19.10.2023

Instructor(s): Cetinsoy Laurent, Noura Benhajji

Language: English

Difficulty: Intermediate



INTRODUCTION TO DATA-SCIENCE WITH PYTHON

Data science is a rapidly evolving field at the intersection of statistics, computer science, and business acumen. Understanding data and its hidden patterns play a crucial role in decision-making and strategic planning in today's data-driven world. Python, due to its readability and a wide array of scientific libraries, is a widely used programming language in data science. This module aims to equip learners with fundamental concepts and practical skills of data science using Python.

[View online](#)

Price: 56,00 €

Start date: 19.10.2023

Instructor(s): Cetinsoy Laurent

Language: English

Difficulty: Intermediate



INTRODUCTION TO DEEP LEARNING

Deep learning methods have revolutionized the machine learning field. They have encountered tremendous success in computer vision, audio application or natural language processing. They draw their success, among other things, because they are able to provide automatic feature engineering thanks to their hidden layers. The goal of this course is to gain a first understanding of such models and learn how to train and use them. Transfer learning a standard technique to train models more efficiently will be covered.

[View online](#)

Price: 84,00 €

Start date: 31.10.2023

Instructor(s): M. Cetinsoy Laurent

Language: English

Difficulty: Intermediate



INTRODUCTION TO IMAGE PROCESSING

Image processing is a subset of computer science and electrical engineering that focuses on manipulating and enhancing images to extract information, improve visual appeal, or prepare them for computational tasks such as classification and object detection. Using algorithms and techniques, it transforms images to achieve desired outcomes, ranging from basic tasks like resizing and color adjustments to advanced operations like object detection, filtering, and segmentation. As an interdisciplinary field, image processing plays a pivotal role in various domains, including medical imaging, autonomous vehicles, satellite imagery analysis, and digital media.

[View online](#)

Price: 36,00 €

Start date: 04.03.2024

Instructor(s): Nina Hosseini-Kivanani, Aria Nourbakhsh

Language: English

Difficulty: Beginner



INTRODUCTION TO MACHINE LEARNING WITH PYTHON

This course aims to introduce the principles and methods of machine learning (mainly supervised machine learning on tabular data) with Python. The first steps will be to use and assess trained models. Then the course will focus on the methods to train a model. Data loading and pre-processing, including feature engineering will also be covered as they are critical stages for successful model training. Basics of non-supervised learning will also be covered as a bonus.

[View online](#)

Price: 84,00 €

Start date: 25.10.2023

Instructor(s): Noura Benhajji

Language: English

Difficulty: Intermediate



INTRODUCTION TO NATURAL LANGUAGE PROCESSING

Natural Language Processing (NLP) is a branch of artificial intelligence that bridges the gap between human communication and computer understanding. It enables machines to process, analyze, and generate human language in a meaningful way. In this course, we explore different NLP-related tasks such as text classification, machine translation, and speech recognition. We will use some packages that facilitate text processing and provide the theoretical background behind the algorithm utilized in NLP.

[View online](#)

Price: 36,00 €

Start date: 19.02.2024

Instructor(s): Aria Nourbakhsh, Nina Hosseini-Kivanani

Language: English

Difficulty: Beginner



JOURNEY TO AI AND CHATGPT

In this journey, the learner gets an overview the history of AI, its ups and downs, a glimpse behind the scene how it works and how an AI system can be used in daily life. Some AI systems are analysed to provide precise illustrations on the opportunities and limitations of AI. ChatGPT is studied more in detail, how prompting helps to fully profite of this chatbot and how similar AI systems may help us in our professional work.

[View online](#)

Price: 12,00 €

Start date: 24.10.2023

Instructor(s): Dr Serge Linckels

Language: English

Difficulty: Beginner



JOURNEY TO AI AND CHATGPT

In this journey, the learner gets an overview the history of AI, its ups and downs, a glimpse behind the scene how it works and how an AI system can be used in daily life. Some AI systems are analysed to provide precise illustrations on the opportunities and limitations of AI. ChatGPT is studied more in detail, how prompting helps to fully profite of this chatbot and how similar AI systems may help us in our professional work.

[View online](#)

Price: 12,00 €

Start date: 23.11.2023

Instructor(s): Dr Serge Linckels

Language: English

Difficulty: Beginner



MASTERING CHATGPT AND PROMPT ENGINEERING TO UNLEASH YOUR PRODUCTIVITY AND CREATIVITY

This course about ChatGPT and prompt engineering is aimed at students who have an interest in AI language models. It's especially valuable because it offers skills that can be used in real world situations, and it's created for all, from beginners to those with more experience.

The learning journey begins with simple prompt engineering, a vital part of AI communication. They'll get to understand the basic rules of prompt engineering, delve into how ChatGPT operates, and discover how to apply these skills to their individual projects.

The course's main goal is to ensure students truly understand prompt engineering. At the end of the course, students should be capable of using this newfound knowledge creatively in their own work. The aim is to show students how to use ChatGPT efficiently for their own needs.

The teaching approach is practical and interactive, offering step-by-step instructions and real-life scenarios.

[View online](#)

Price: 8,00 €

Start date: 25.01.2024

Instructor(s): Julien Carosi

Language: English

Difficulty: Beginner



PRIVACY AND DATA PROTECTION: LEGAL STAKES AND FUNDAMENTALS

This course provides you with an introduction to the requirements of the General Data Protection Regulation (GDPR), how to comply and demonstrate compliance, how to address practical issues, and how to embed data protection into operations.

[View online](#)

Price: 16,00 €

Start date: 20.11.2023

Instructor(s): M. TOME, Michaël

Language: English

Difficulty: Beginner



QUANTUM COMMUNICATIONS: THEORY AND APPLICATIONS

Quantum communications is transitioning swiftly from theoretical concepts to practical applications, with a growing number of commercial products already available in the market. For instance, quantum key distribution is one such application that has been successfully implemented. This theory course offered to the interested professionals, covers the basic theory and potential applications of quantum communication systems. The aim of this course is to familiarize the attendees with the notion of quantum states, difference between quantum and classical information, role of entanglement in quantum communications, detailed explanations of fundamental protocols of quantum communications, and the motivation and possible architectures of quantum internet. Familiarity with the basics of linear algebra is recommended but not required.

[View online](#)

Price: 12,00 €

Start date: 27.11.2023

Instructor(s): Professor Chatzinotas Symeon & Dr Ur Rehman Junaid

Language: English

Difficulty: Beginner



QUANTUM COMPUTING: BASIC THEORY AND FUTURE EXPECTATIONS

Quantum computing is expected to revolutionize the field of computing in the next few decades. This theoretical course introduces the basics of this interesting yet challenging field. The main aim of this course is to equip the attendees with basic facts about quantum computing, a beginner-level understanding of how quantum computing provides the advantage in computation, and what to expect by incorporating quantum computing in their organization/workflows.

[View online](#)

Price: 12,00 €

Start date: 27.11.2023

Instructor(s): Professor Chatzinotas Symeon & Dr. Ur Rehman Junaid

Language: English

Difficulty: Beginner



THE COMPONENTS OF BUSINESS INTELLIGENCE (BI) / DATA ANALYTICS PROCESSES

This training focuses on providing a comprehensive overview of the essential components that make up Business Intelligence (BI) and Data Analytics processes.

Join our training program to explore the vital components of Business Intelligence (BI) and Data Analytics processes. Gain insights into data collection, warehousing, visualization, analysis, reporting, performance management, and advanced analytics techniques

Thanks to a theoretical presentation illustrated by specific cases, this course will allow you to understand in one day, the key BI factors helping managers to drive informed decision-making.

[View online](#)

Price: 26,00 €

Start date: 16.01.2024

Instructor(s): Axel Pierard

Language: English

Difficulty: Beginner



THE COMPONENTS OF BUSINESS INTELLIGENCE (BI) / DATA ANALYTICS PROCESSES

This training focuses on providing a comprehensive overview of the essential components that make up Business Intelligence (BI) and Data Analytics processes.

Join our training program to explore the vital components of Business Intelligence (BI) and Data Analytics processes. Gain insights into data collection, warehousing, visualization, analysis, reporting, performance management, and advanced analytics techniques

Thanks to a theoretical presentation illustrated by specific cases, this course will allow you to understand in one day, the key BI factors helping managers to drive informed decision-making.

[View online](#)

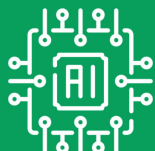
Price: 26,00 €

Start date: 16.04.2024

Instructor(s): Axel Pierard

Language: English

Difficulty: Beginner



UTILISATION ET SPÉCIALISATION DE GRANDS MODÈLES DE LANGUES COMME CHATGPT

Les chatbots basés sur de grands modèles de langue (LLM) construits à l'aide de réseaux de neurones transformateurs tels que ChatGPT jouent un rôle croissant dans la société, grâce à leur bonne capacité à générer des textes, des images, des sons et des vidéos de type humain. Ils sont/peuvent/seront utilisés dans divers domaines tels que : le service client, les assistants personnels, l'éducation, la santé, l'accessibilité, la création de contenu, le divertissement et bien plus encore.

Cependant, si les chatbots basés sur les LLM offrent de nombreux avantages, il existe également des risques et des défis potentiels. Il s'agit notamment du risque de générer des contenus inappropriés ou préjudiciables, des difficultés à comprendre le contexte, des difficultés à fournir des informations exactes et des préoccupations concernant la confidentialité et la sécurité des données. Les considérations éthiques sont cruciales à mesure que ces technologies continuent de se développer et de s'intégrer de plus en plus dans la société.

[View online](#)

Price: 56,00 €

Start date: 15.12.2023

Instructor(s): Prof. Dr. GUELF, Nicolas, DE JESUS SOUSA , Tiago

Language: French

Difficulty: Beginner